



thermal transfer printer *compact 32d*

*Versatile, affordable
and easy to install.
The perfect digital
coding solution for
labels and flexible films.*

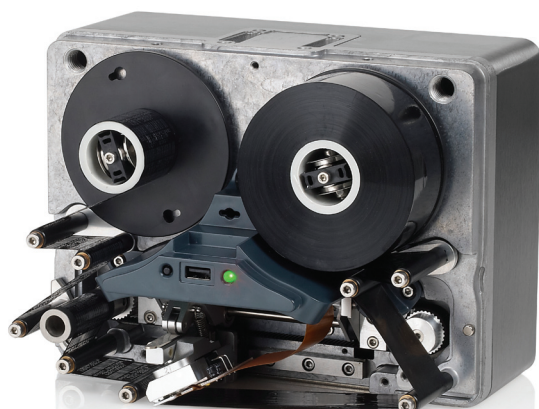


Versatile

- Intermittent and continuous modes in the same unit (software controlled)
- Printing from low to high speeds (10 to 750 mm/s, subject to application)
- 32mm wide 300dpi printhead allows printing of logos, barcodes and text
- USB and ethernet connectivity
- Integrated printhead heater allows for printing at high and low temperatures

Easy to install

- Easy installation into existing bracketry due to compact size
- EasyAlign allows for push button printhead alignment without the use of tools or shims
- Quick conversion from left hand to right hand operation or vice versa without any additional parts



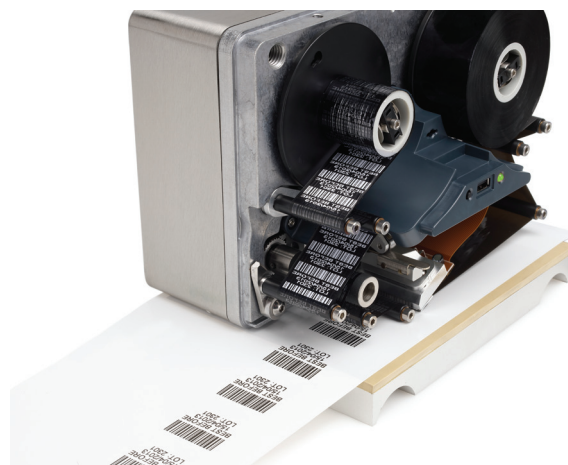
Reliable with low cost of ownership

Down time and running costs are minimised by

- 4 Ribbon save modes
 - Ribbon economy up to 60% in 1% increments
 - Ribbon retraction
 - Stop mid-print
 - Column mode
- Proven dancing arm technology eliminates ribbon breakages
- 770m long ribbon rolls (up to 1925m effective length with ribbon economy mode)
- No compressed air required
- Quick and easy ribbon loading

Easy to operate

- Simplified user interface with EasyView big button interface
- Graphical images of selected design
- Easy on board label creation
- Approved printing ribbons for optimum performance available in both 34mm and 22mm widths

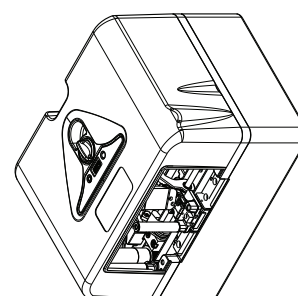
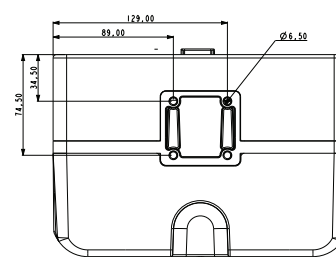
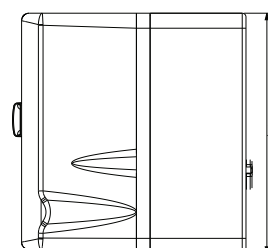
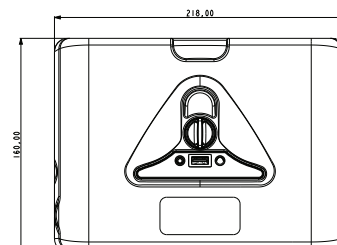


specifications

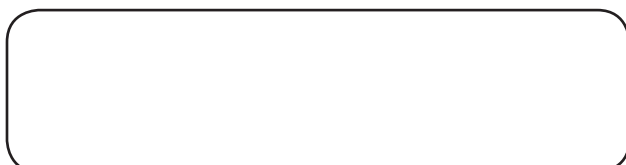
thermal transfer printer *compact 32d*

COMPACT 32D

Printer Unit	
Weight and dimensions	5.6kg 218(W) x 160(H) x 150(D)
Print density	300 dpi
Print speed	Up to 750 mm / second in continuous mode* Up to 6 prints per second in intermittent mode (10mm long print)* *Dependent on message size, substrate, ambient temperature, installation quality and ribbon used
Print area (intermittent)	32 mm x 55 mm
Print area (continuous)	32 mm x 500 mm
Character Control	Date code format Offsets Shift codes Serial number generation Most true type fonts
Ribbon System	
Ribbon length	770m (up to 1925m effective length with ribbon economy mode)
Ribbon width	34 mm, 22 mm
Ribbon saving	Economy mode variable up to 60% in 1% increments Retraction mode less than 1 mm gap between prints Column mode Stop mid-print
Controller	
User interface	Web browsable graphical user interface (GUI) or dedicated browser software Optional Easyprint Compact Touchscreen available with 5.7" full colour display
Label creation	Onboard and via Easydesign (included)
Optional compact Touch Screen	5.7" full colour touchscreen (640x480 resolution) Handheld with docking station included 173(W) x 128(H) x 34(D) (excluding docking station)
Features	
Connectivity	Ethernet / USB x 2 / mini USB (service)
Alarm outputs	Error, Ready, Warning, Spare (software configurable volt free contacts)
Accessories	Full range of specific bracketry, bracket adaptors
Approvals	CE, TUV
Environment	
Installation	Temperature: 5°C to 40°C Humidity: 20-80%, non condensing
Electrical	90v - 264v AC 50/60Hz, or 24v DC (+/- 2%) at 5A (if direct)
Air supply	Not required



Your partner



epc32d/0113

We reserve the right to change the design or specification of our products without notice. Some of the information contained in this brochure is general in nature, and customers should check that it is applicable to their individual circumstances.



www.easy-print.com